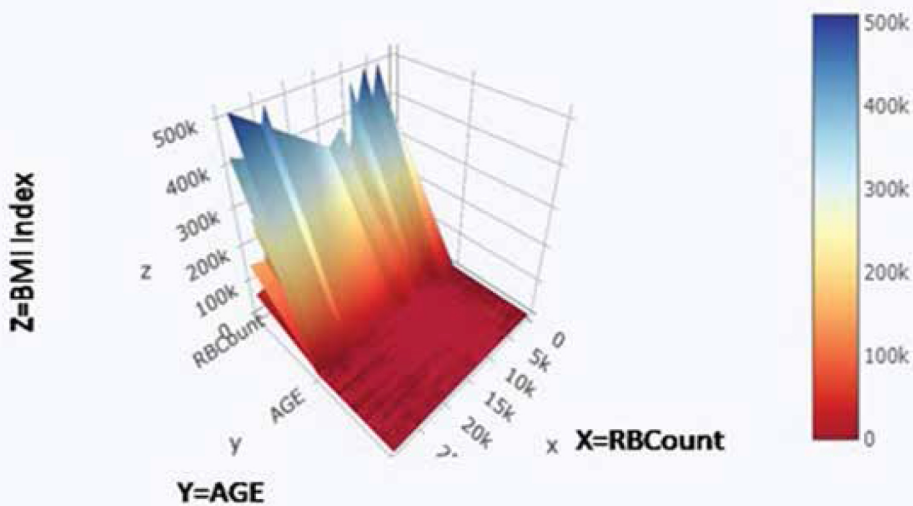


Health issues that last more than 3 months are referred to as chronic diseases. As a person ages, risks of chronic diseases rise. The leading chronic diseases in developed countries include arthritis, heart attacks, stroke and oral health problems. In an effort to improve standards of living, researchers are testing the feasibility of implementing predicting machine learning algorithms.

Advanced ensemble machine learning algorithms are new to this field of study. The proposed system explores multiple advanced ensemble machine learning algorithms (such as the Gradient Descent Boosting Algorithm) and tries to predict the occurrence of the chronic disease. The models were validated across different datasets to ensure highest accuracy.

```
1 ds1[['RBCCount', 'AGE', 'BMI Index']].iplot(kind='surface', colorscale='rdylbu')
```



Shridevi
CSE

62 PROJECT

FORECASTING
CHRONIC
DISEASE OF
PATIENTS
USING
COMPUTERISED
HEALTH
RECORDS